

PHILOSOPHY



PRECIOUS AND RARE

Precious and rare are words that signify Takai. Our philosophy, and the Takumi symbol, express skill, aptitude and dexterity. The manual qualities that are also those of a creative Artisan hairstylist.

EXPERTISE 04

SUMMUM STEEL 06

SUMMUM
HAKAMA

HIP STEEL 08

SWO

KARAKURI CONCEPT 10

KARAKURI BA
KARAKURI CB
KARAKURI MA
KARAKURI MB

VG-10 Cobalt STEEL 14

TOUCAN
MEIJI 7
PELICAN
CORUM
HYBRID
GINZA
CORUM FL
CISELOR
EUROPA

SUS 440C ENRICHED STEEL 20

VSP2
AKIO
KUMA
EIKI
VUH 420
ZOOM
DUAL
JUNKO
ODYSSEE
OXALIS
BARBER
LINEA

RAZORS & BLADES 28

PROSHAVE
PLATINUM
TWO-IN-ONE

EXPERTISE

BETWEEN

TECHNOLOGICAL

AND TRADITION



**TECHNOLOGICAL INNOVATION:**

- **The selection of the best steels.**
- **The ergonomic design of the models.**

Computer-Aided-Design, digital software that creates 3-dimensional models of the hand, simulates the specific constraints acting on the muscles and tendons and then creates innovative designs that support your technical movements, for indispensable working comfort.

- The manufacturing of models on digitally-controlled machines.

RESPECT FOR TRADITION:

- **Sharpening and polishing performed entirely by hand by our master sharpeners.**
- A highly-detailed ancestral technique, Hamaguri convex sharpening uses a series of 7 grinding angles for an extreme edge combined with great cutting softness.
- It is a very powerful technique since the curve of the blade is perfect up to the wire. Thus, the edge of the blade forms an integral part of the blade mass for greater rigidity and longevity.

SUMMUM STEEL

Invitation to Excellence

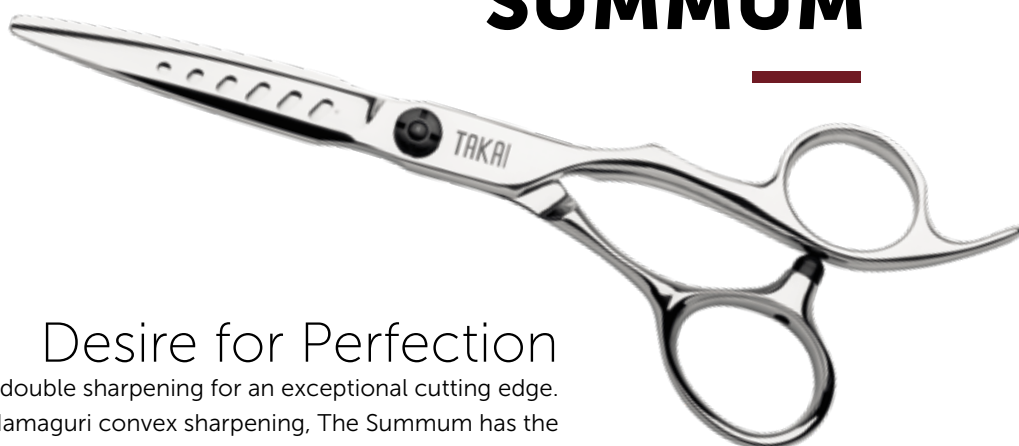
This alloy is enriched with vanadium, molybdenum, cobalt, chrome, tungsten and manganese.

The perfect combination of these elements gives the steel exceptional properties:

- improved resistance to corrosion and tarnishing,
- reinforced anti-oxidant properties,
- increased strength.

Especially recommended for cutting dry hair.

SUMMUM



Desire for Perfection

Pure lines with double sharpening for an exceptional cutting edge. In addition to Hamaguri convex sharpening, The Summum has the Miracle Slit, micro incisions on the edge of the blade. As a result: With straight cutting, the Summum lets you cut thick strands, with the micro-slits collecting the hair; with thinning-sliding, the movement is precise and quick while combining cutting softness.

Size: 5.5"/6.3" inches

Screw System mounted on a ball bearing

Integrated finger rest

HAKAMA



A Unique Style

A distinctive blade design for an exceptionally powerful cut. Instinctive feel thanks to the curved thumb ring. An unlimited cutting pleasure.

Size: 5.5"/5.8"/6.3"/6.8" inches

Screw System mounted on a ball bearing

Integrated finger rest

HIP STEEL

The Signature of High Technology

A new generation of sintered or powdered steel, HIP is a process of Hot Isostatic Pressing.

Nano-particles of the best steels are selected, then compacted and compressed under heat in an oven by more than 1,500 presses.

This manufacturing process results in pure, very dense steel for increased durability of the blade edge and greater cutting pleasure.

SWO



Special TMS Comfort Option

While design and working comfort are priorities in the creation of all our scissors, we're offering a model that's more specifically adapted to the prevention of musculo-skeletal disorders (MSD), the Model SWO.

The 360° rotating ring on the Model SWO reduces tension on the wrist, tendons and shoulders as you cut. This comfort option prevents and soothes problems like carpal tunnel syndrome, a common problem for stylists. The feel is natural because the thumb can move. It can follow the cutting movement with perfect precision without requiring movement of the shoulders and contractions of the stylist's hand.

Undeniable working comfort to preserve your health and career. Offered on the Karakuri line, this option also allows you to keep your handles and just repurchase the blades. So, these scissors are a profitable but also durable investment.

Size: 5"/5.5"/5.8"/6.3"/15 teeth/30 teeth

Screw System
Integrated Finger Rest



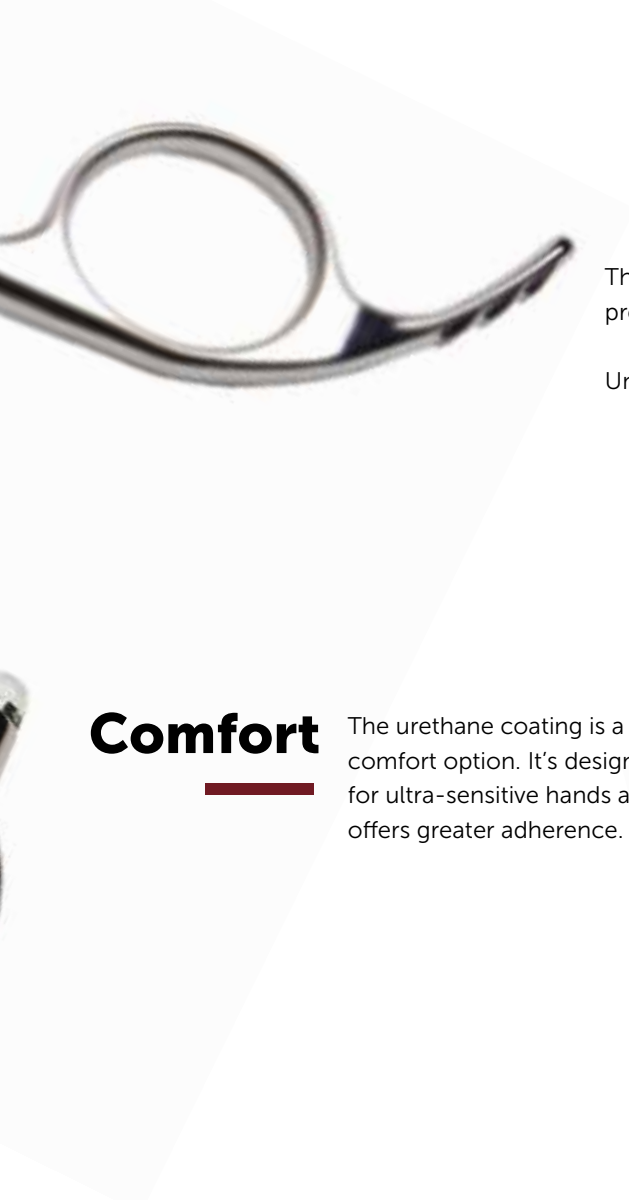
KARAKURI CONCEPT

Personalized Excellence

In Japanese, Karakuri means a clever device. Create your own pair of scissors based on your personal comfort and technical needs.

This innovative, patented concept lets you save money by repurchasing only the blades. Made of Premium HIP powdered steel, the KARAKURI line lets you choose from 4 handle designs and 4 blade lengths, based on your cutting techniques.

Master volume with your choice of 2 thinning scissors (15 or 30 teeth). Prevent musculoskeletal disorders with 3 optional SWO rotating rings. Optional urethane-coated handles for ultra-sensitive hands. Personalized for your ultimate cutting pleasure!



The rotating ring reduces tension on the wrist, tendons and shoulders and prevents problems like carpal tunnel syndrome.

Undeniable working comfort to preserve your health and career.

Comfort

The urethane coating is a comfort option. It's designed for ultra-sensitive hands and offers greater adherence.



Effect

T15 lets you remove up to 35% of the thickness.



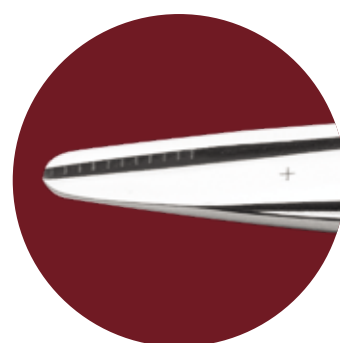
T30 lets you remove up to 20% of the thickness.



Miracle Slit

AN INGENUOUS CONCEPT OF EXCELLENCE!

With straight cutting, the Miracle Slit lets you cut very thick strands as the micro slits at the edge collect the hair. With thinning-sliding, the motion is precise and quick, with softness and cutting fluidity thanks to the Hamaguri sharpening. Option available on 5"/5.5"/5.8" and 6.3" inch blades.



KARAKURI BA



Elegance and Passion for Cutting

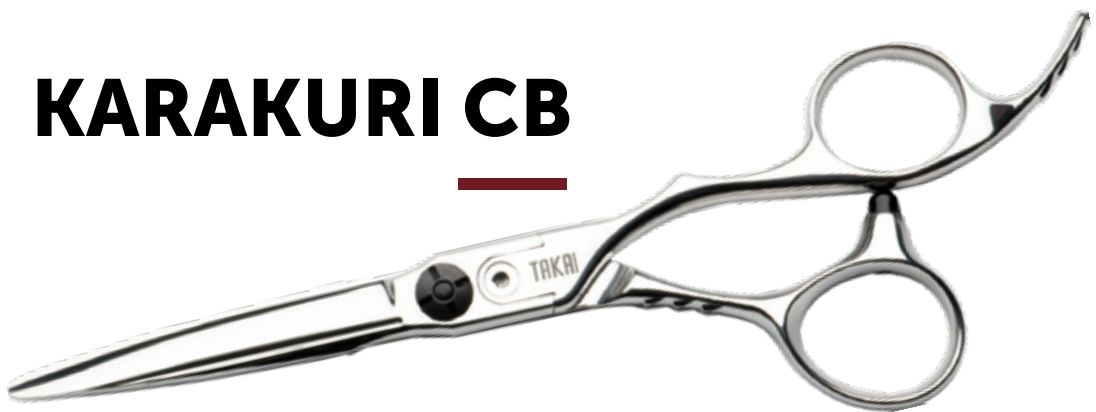
On the handles of the BA model, the fleur-de-lys recalls the elegance of the materials, cutting pleasure and a Japanese homage to France. In the language of flowers, the lily evokes the nobility of sentiment, passion and enthusiasm. In Japan, this historic flower is also one of the symbols that evoke France.

A pair of scissors with Sacred Character. Offset ergonomics with a curved finger rest for optimal handling.

Size: 5"/5.5"/5.8"/6.3"/15 teeth/30 teeth

Screw System
Integrated Finger Rest

KARAKURI CB



A Beautiful Best Seller

On the handles of the Model CB, the finely sculpted grooves reveal the beauty of a cutting tool whose ergonomics account for some of the best sales of Takai Technology scissors. Intuitive handling made beautiful by guillochage detailing.

Size: 5"/5.5"/5.8"/6.3"/15 teeth/30 teeth

Screw System
Integrated Finger Rest

KARAKURI MA



Strength and Power!

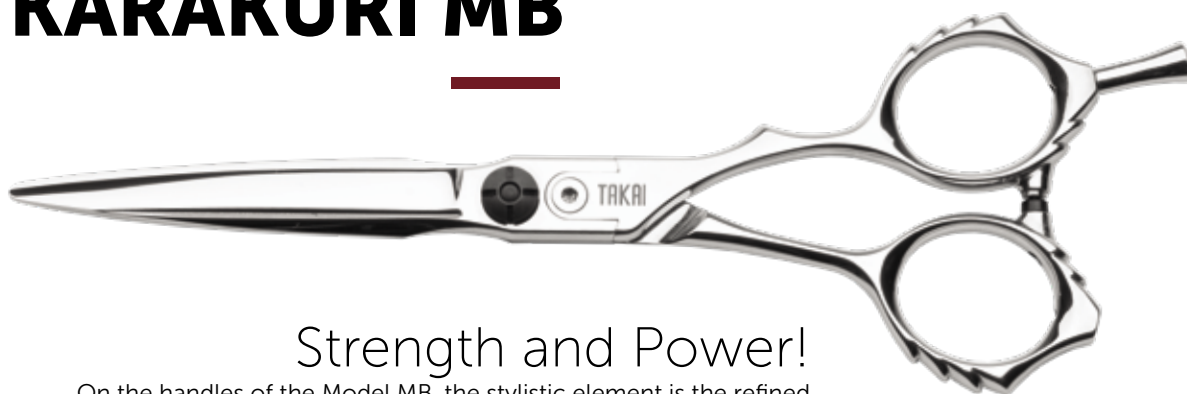
On the handles of the Model MA, the stylistic element is the refined guilloché on the rings recalling the «Great Wave of Kanagawa», the famous Japanese print by the celebrated painter Hokusai. The Strength and Cutting Power of Japanese blades. Because of the symmetrical design of these scissors, they can be used by both right-and left-handed stylists.

Size: 5"/5.5"/5.8"/6.3"/15 teeth/30 teeth

Screw System

Double removable finger rests

KARAKURI MB



Strength and Power!

On the handles of the Model MB, the stylistic element is the refined guilloché on the rings recalling the «Great Wave of Kanagawa», the famous Japanese print by the celebrated painter Hokusai. The Force and Cutting Power of Japanese blades. Handling is optimized by the support tab on the scissor's upper handle.

Size: 5"/5.5"/5.8"/6.3"/15 teeth/30 teeth

Screw System

Removable finger rest

VG-10 COBALT STEEL

A Fusion of Knowledge

The properties of the super alloy VG-10 Cobalt give the scissors increased strength for greater resistance to wear and cutting softness.

These models are especially recommended for cutting dry hair.

TOUCAN



The Incarnation of Strength

Wide and firm, the 58 mm blades enable strong movements for creating volume while maintaining softness in the feel of the cut.

Size: 5.8" inches

Screw System
Integrated finger rest

MEIJI7



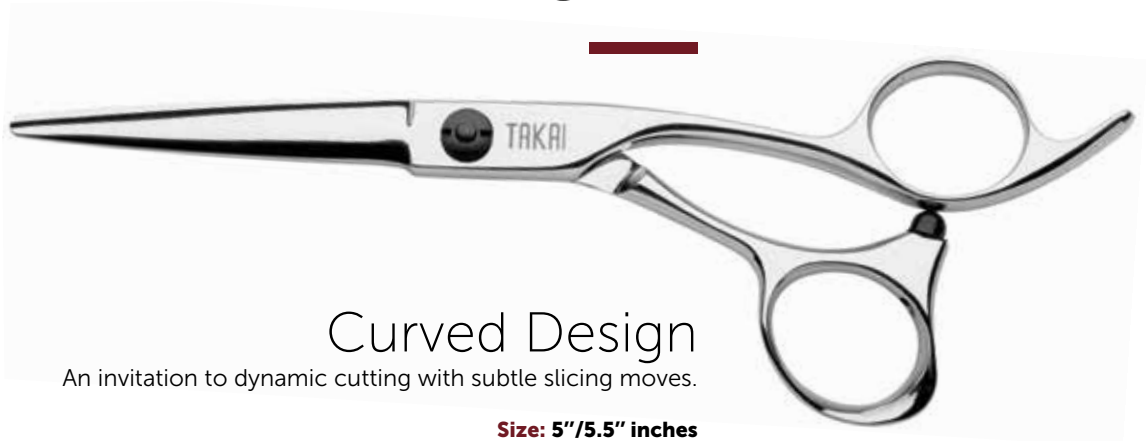
Extreme Blades

A clean, precise cut for devotees of English techniques or male styles.

Size: 7" inches

Screw System mounted on a ball bearing
Double removable finger rests

PELICAN



Curved Design

An invitation to dynamic cutting with subtle slicing moves.

Size: 5"/5.5" inches

Screw System

Integrated finger rest

CORUM



Natural Esthetics

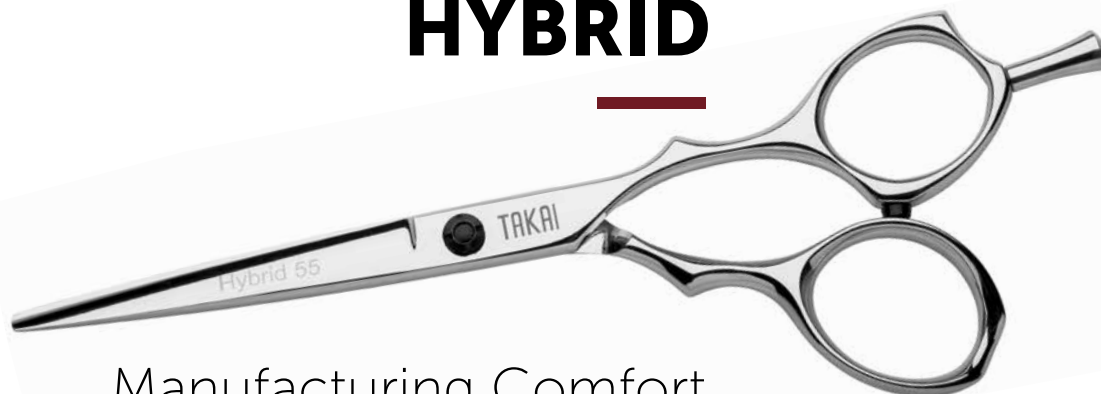
An intuitive feel for increased versatility in cutting techniques.

Size: 5.5" inches

Screw System

Integrated finger rest

HYBRID



Manufacturing Comfort

Precise control for straight cuts and dynamic ease in slicing movements are guaranteed thanks to the curved design of the thumb ring.

Size: 5"/5.5"/6" inches

Screw System mounted on a ball bearing
Removable finger rest

GINZA



The Symbol of Elegance

Perfect balance and stability thanks to the agile design of the inside handle.

Size: 5"/5.5" inches

Screw System
Integrated finger rest

CORUM FL



For the Most Demanding Left-Handed Stylists

Impeccable straight cutting, precise point cutting
and controlled slicing thanks to its sharp cutting edge.

**EXCLUSIVELY
FOR LEFT-HANDED STYLISTS.**

Size: 5.5"/6" inches
Screw System
Integrated finger rest

CISELOR



The Creator of Effects

A bold tool that texturizes the hair for deconstructed styles.
For devotees of the technique.

Size: 14 teeth

Can be used on dry hair
Screw System
Removable finger rest

EUROPA



The Mastery of Volume

Precision and softness for thinning, the signature
of a high-quality thinning scissor.

Size: 30 teeth (Europa 300)/ 40 teeth (Europa 640)

Screw System
Removable finger rest

SUS 440C STEEL

ENRICHED WITH VANADIUM AND MOLYBDENUM

Quality without compromise

This alloy guarantees the scissors a sharp cutting edge and good wear resistance.

The properties of Vanadium and Molybdenum increase the blade rigidity and reinforce the anti-corrosion action.

VSP2



A Timeless Classic
Minimalist design for an extreme cutting edge.

Size: 4.5"/5"/5.5"/6" inches
Screw System
Removable finger rest

AKIO



Efficient Style
A comfortable grip for all types of cuts.

Size: 5"/5.5"/6.3" inches
Screw System mounted on a ball bearing
Integrated finger rest



KUMA

New Signature

In its new version, the Kuma offers more versatility in the cut and smoothness in slice. A slightly longer design for better amplitude in a straight cut.

Size: 5.5" inches

Screw System
Removable finger rest



EIKI

A Surprising Design

An unusual design combined with an intuitive feel.
The movement is quick, precise and dynamic.

Size: 5.5" inches

Screw System mounted on a ball bearing
Removable finger rest

VUH 420



Double-Sided

In the Japanese method, with the teeth down, it avoids any mark on the hair. In the European method, with the teeth up, it's a classic thinning scissor.

Size: 42 teeth

Screw System

Removable finger rest

ZOOM



Precision Goal

The short handles let you perform a very close cut.

Size: 5.5" inches

Screw System

Removable finger rest

DUAL



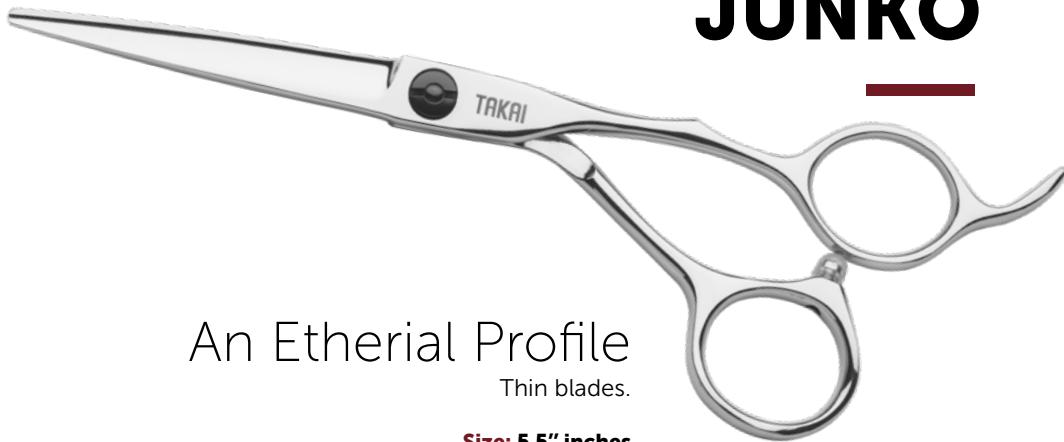
Assured Character

For stylists who like to feel
the scissors in their hand.

Size: 5"/5.5" inches

Screw System
Removable finger rest

JUNKO



An Etherial Profile

Thin blades.

Size: 5.5" inches

Screw System mounted on a ball bearing
Integrated finger rest

Soft Curves

Finesse and cutting precision

ODYSSEE



Perfect Symmetry

Size: 5.5" inches

Screw System

Removable finger rest

OXALIS



Slightly Curved

Size: 5.5" inches

Screw System

Removable finger rest



THE ART OF GUILLOCHAGE

«Details make perfection, and
perfection is not a detail.»

Leonardo da Vinci.

This collection affirms the values of artisans, the love of beautiful objects and precision.

Both the knowledge of handwork and new technologies are highlighted. For devotees of beautiful tools!

Guillochage is created by decorating a surface with parallel lines, straight lines or curved marks that may or may not intersect.

BARBER



Authentic and Precise

With its straight lines for simple elegance and guilloché on the handles for complex geometry, Barber is a hymn to rigor, perfectionism and mastery of the gesture. An homage to the profession.

Size: 5.5"/6" inches

Screw System

Removable finger rest

LINEA



An Iconic Model

A highly-successful brand in 1999, this new edition symbolizes an era of sophistication. The grip is ultra-natural, thanks to the sculpted surface, for perfect control of the handles.

Truly the art of detail.

Size: 5.5"/6" inches

Screw System

Removable finger rest

RAZORS

PROSHAVE



The Art of Shaving

For barbers who want extreme precision in the cutting edge.

Delivered with a dispenser of 24 platinum-enriched blades

PLATINUM



Concentrated Efficiency

Great precision for finishing work and thinning in classic cuts. Barbers will also appreciate the rigidity of these blades for the close feel of a traditional straight razor. The platinum-enriched blades offer durability and an exceptional cutting edge.

*Stainless steel razor
Delivered with a dispenser of 10 platinum-enriched blades*

TWO-IN-ONE



Double the Lifespan of classical Blades

Light and ergonomic, this thinning razor meets all your technical needs. Its patented design provides for a lifespan that is double that of classical blades. Quality thinning is assured.

*Delivered with a safety dispenser for blade replacement
Delivered with a dispenser of 10 platinum-enriched blades*

THE TAKAI WARRANTY



TAKAI MEANS QUALITY, BUT ALSO SERVICE



Each pair of Takai scissors comes with 2 free sharpenings over an unlimited period of time.

Only our workshops are certified to perform these check-ups, which include checking the tips and blade curvature, readjusting the handles and replacing parts, if necessary.

If you drop your scissors, don't worry. Our know-how enables us to restore your favorite tool.

For more information about our customer service shipment methods, contact us: by e-mail at service@takai-technology.com or on our website at www.takai-technology.com



www.takai-technology.com

 [www.facebook/TakaiTechnology](https://www.facebook.com/TakaiTechnology)

 www.instagram.com/takaisscissors

 youtube@temainstruments